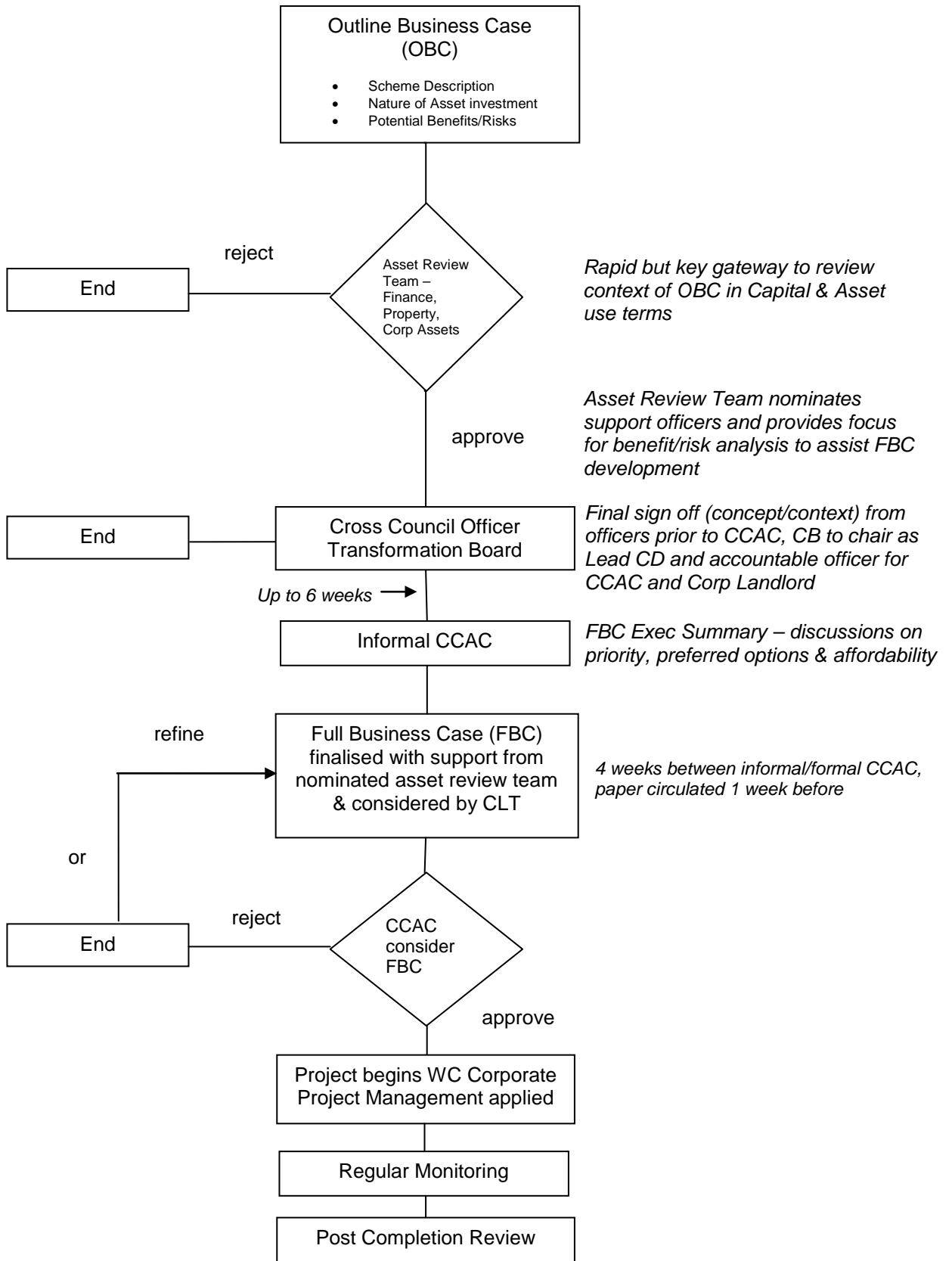
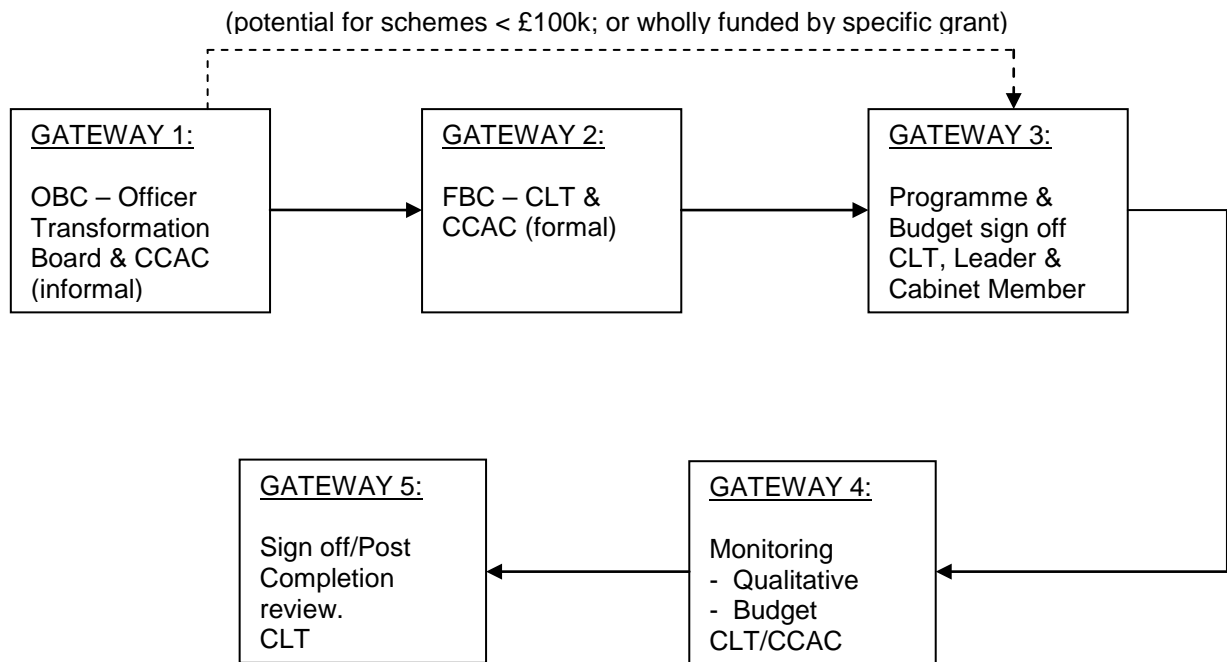


Proposed Interim Capital Bidding Gateway Process:



GATEWAY PROCESS



OBC/FBC ASSESSMENT CRITERIA

Criteria	Scoring				
	1	2	3	4	5
A. Sustainable Communities (E & A)	Limited ability on own to provide sustainable community needs now or in future.	Limited ability on own to provide sustainable communities in the future.	Some potential to maintain current local community.	Provides high probability of/proven stability of local community provision.	Provides high probability of/proven 10 year growth local community numbers/place & meet future needs.
B. Funding	0% externally funded/limited capital receipts, but options to fund borrowing.	50% externally funded/capital receipts and options to fund 50% borrowing costs.	50% externally funded & options available to fund 50% from Capital and/or revenue.	100% externally funded.	100% external funded & no revenue costs/income offsets costs.
C. Saving	+ costs but options available to fund.	50% saving possible and options available to fund remaining costs.	Payback 2 – 5 years probable and alternative saving options available.	Payback 2 – 5 years 100% highly likely.	Payback in < 2 years 100% and proven.
D. Partner dependency/support NB - partner can be internal or/and external	Partner engagement needed to make viable but not yet approached.	Partner engagement needed to make proposed viable and discussions started.	Partner engagement need to make proposal viable and granted as principle.	Partner engagement needed & secured.	No partner engagement necessary.
E. H & S and Risk	Liability not quantified but will be < cost of works.	Liability possible but not quantified & may be less than cost of works.	Liability possible but not quantified only estimated & initial project > = cost of works.	Liability highly probable and cost of works in line with liability.	Liability certain if works not carried out & liability > cost.
F. Legality	Dispute over title/licenses. Sitting tenants etc... (& costs included above).	Requires legal action e.g. CPO, Planning approval (and costs included above)	Clarification needed only can be managed in house as normal business.	Procurement OJU needed but standard contract process expected.	Clear title standard contract.
G. HR	Large staff implications for same solutions	Large staff implication for improved conditions	Minor staff implications and delivers same conditions.	Minor staff implications e.g. move, but improves conditions.	No staff implications/ Improves staff conditions.

H. IT	Will require major system reconfiguration and costs	Will require significant system reconfiguration and costs	Can be managed but will have implications for other projects and system operations.	Can be managed but will need some prioritisation of other work	Can be managed within existing system and resources capability/capacity
-------	---	---	---	--	---